



grace:
Always more.

MÖVENPICK HOTEL MELBOURNE

The Project

Situated at Melbourne's iconic Spencer and Bourke Street is Mövenpick Hotel Melbourne, a 172-room premium hotel that forms the six-level podium of Melbourne's famous Premier Tower development. The Mövenpick Hotel Melbourne offer guests contemporary boutique interiors, a café dedicated to the brand's signature ice cream, a modern South-East Asian inspired restaurant and bar, as well as a 25-metre swimming pool, sauna, gym and boardroom.





Project Overview

Grace was engaged to facilitate the warehousing, logistics and installation aspects of the hotel fit-outs. The Mövenpick Hotel is situated at Melbourne's Premier Tower – a mixed-used development which consist of residential apartments, hospitality and retail shops. At the time, the hotel was still in its build stages, meaning all Grace team members were required to share resources and work with external parties and tradesmen such tilers, painters and glaziers who were tasked to complete the hotel.

Project Challenges

The project's FF&E fit-out phase occurred during one of the strictest COVID lockdown periods in Melbourne. The team faced multiple challenges including delayed builders' program, stretched staffing levels due to mandated COVID regulations and delayed inbound freight due to global shipping issues.

The locations of project team members also proved to be a challenge with the client's project team in Sydney, the Grace Project Manager in Brisbane and Grace FF&E Fit-out crew in Melbourne, which made the project more complex as face-to-face meetings were not possible and all correspondence took place online or over the phone.





Project Goals

The project had two key goals:

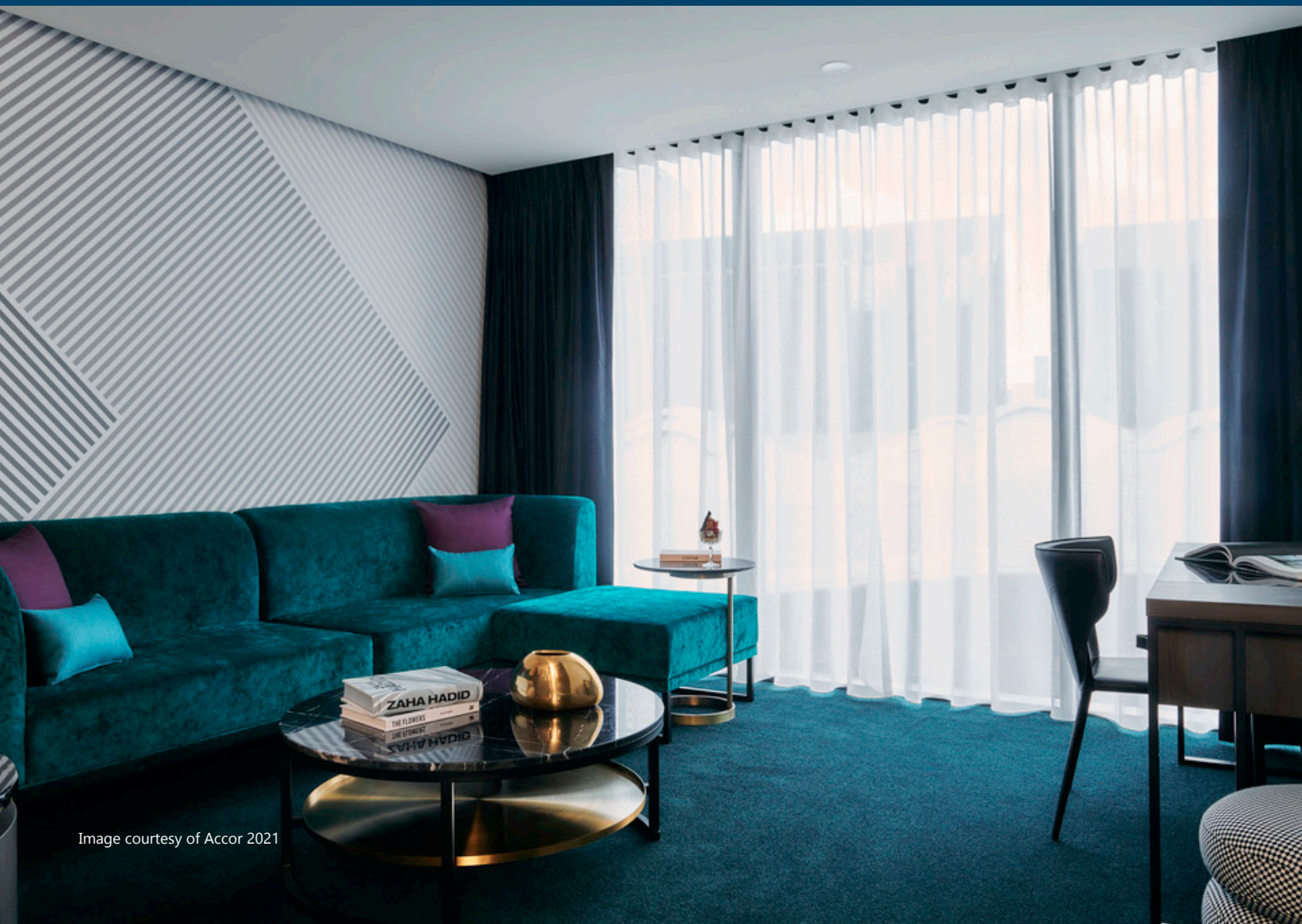
- 01** Deliver a fully operational hotel to the end client within a short timeframe to meet the hotel's grand opening date.
- 02** Complete the project while adhering to strict COVID rules and regulations.

Project Outcome

Through collaborative efforts between the Grace Project team in Brisbane and the FF&E Fit-out crew in Melbourne, Grace Workplace Solutions was able to:

- Successful delivery of all equipment
- Complete the fit-out of 172 guest rooms and suites on all 6 levels
- Furnishing of public areas including lobbies, pool area, lifts, restaurant and bar
- Transportation of kitchen equipment

All whilst following strict COVID restrictions placed on the states involved.





Past success leads to future prospects

Over the years, Grace have completed multiple projects for this client in various shapes and sizes all over Australia. This led to the two building a strong relationship where this client will be inclined to choose Grace for any commercial relocations and FF&E Fit-out projects. For the Mövenpick Hotel Melbourne, Grace not only facilitated the successful transportation, storage and installation of all equipment and furniture, but also, completed the project while following strict COVID protocols. The success of this project is hugely credited to the overall Melbourne commercial team and their commitment to delivering exceptional outcomes that Grace is known for.